

# X'TRALIFE WEAR PLATE XL-ECO



A Complex chromium carbide alloy deposited with addition of B & W suitable for moderate abrasion and impact.

## 1. SALIENT FEATURES

- a) Lowest Dilution
- b) Uniform hardness throughout deposit

## 2. AVAILABLE SIZES

1400 X 3000 mm, 1250 x 2750 mm

## 3. THICKNESS

5+3,6+4,8+4,10+4,10+5,8+6

## 5. PHYSICAL PROPERTIES

- a) Hardness - 56-59 Rc
- b) % of Primary Carbides - 40-50%
- c) % of Secondary Carbides - 10-15%
- d) % of boride - 8-10%
- d) Temp. - 550° C
- e) Alloy Basis- C,Cr, Mn, Si,B,W

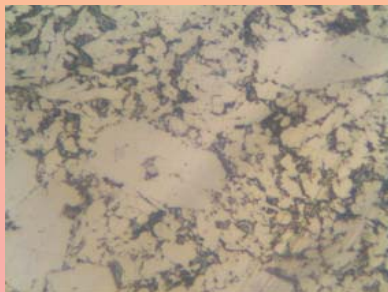
## CUSTOMER ADVANTAGES

- a) Highest Wearresistance
- b) Uniform wearresistance every mm of wear.

## 6. APPLICATIONS

- a) Clinker Crusher Hood Liners
- b) Chutes
- c) Elbows, Pipe etc.

## 4. MICROSTRUCTURE



## ABRASION TEST RESULT

Material	Weight Loss (g)
M.S	4.000
Wear Plate	0.1008



*Wear doctors to core sector industry*