

X'TRALIFE NM WEAR PLATE

XL-NM2K1



A Rich complex chromium carbide alloy deposit with higher chromium in 1st pass for excellent wearresistance. Improved version of XL-61 X'tralife Wear Plate.

1. SALIENT FEATURES

- a) Lowest Dilution
- b) Uniform hardness throughout deposit.
- c) Carbides present throughout the hardlayer
- d) up to 55 -60% primary carbides & 20-30 % secondary carbides
- e) Contains Niobium carbides.



CUSTOMER ADVANTAGES

- Highest Wearresistance
- Uniform wearresistance for every mm of wear.
- do-----
- Greatly increased wear life.

2. AVAILABLE SIZES

1400 X 3000 mm, 1250 x 2750 mm

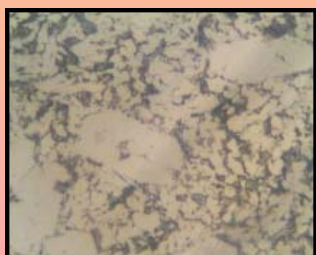
SURFACE PHOTO



3. THICKNESS

6+4,8+4,10+4,10+5,8+6 etc

4. MICROSTRUCTURE



5. PHYSICAL PROPERTIES

- a) Hardness - 62-64 Rc
- b) Alloy Basis- Cr,C,Mn,Si. Nb
- c) % of Primary Carbides - 55-65%
- d) % of Secondary Carbides - 25-30%
- e) % of Boride - 8-10%

ABRASION TEST RESULT

Material	Weight Loss (g)
M.S	4.000
Wear Plate	0.09

6. APPLICATIONS

- a) Fan Housing Liner
- b) Fan Blades
- c) Screens
- d) Discharge Chute



Wear doctors to core sector industry