

X'TRALIFE WEAR PLATE

XL-IMP



XL-IMP is the impact resistant grade of X'tralife wear plate. Deposits readily work harden under heavy impact from boulders. Separately suitable for particle size above 60 to 80 mm.

1. SALIENT FEATURES

- a) Lowest Dilution
- b) Work Hardening
- c) Titanium & Niobium carbides on grain boundaries.
- d) Uniform hardness throughout deposit.
- e) Carbides present throughout the hardlayer

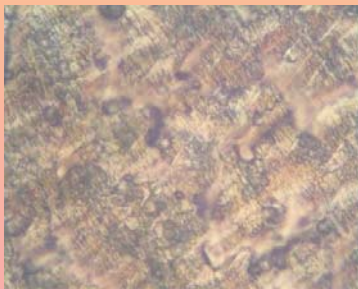
2. AVAILABLE SIZES

1400 X 3000 mm, 1250 x 2750 mm

3. THICKNESS

6+4,8+4,10+4,10+5,8+6

4. MICROSTRUCTURE



5. PHYSICAL PROPERTIES

- a) Hardness - As deposited 28-30 Rc
work Hardened 48-52 Rc
- b) Temp. - 200° C
- c) Alloy Basis- Cr,C,Nb,Mn,Si,Ti

SURFACE PHOTO



CUSTOMER ADVANTAGES

- a) Highest Wearresistance
- b) Improves wearresistance on impact
- c) Arrests initial wear before deposit work hardens as these carbides are present.
- d) Uniform wearresistance for every mm of wear.

6. APPLICATIONS

- a) Lime Stone crusher liners.
- b) Coke Crusher liners.
- c) Dampers
- d) Body Liners etc.



ABRASION TEST RESULT

Material	Weight Loss (g)
M.S	4.0000
Wear Plate	0.110

Wear doctors to core sector industry